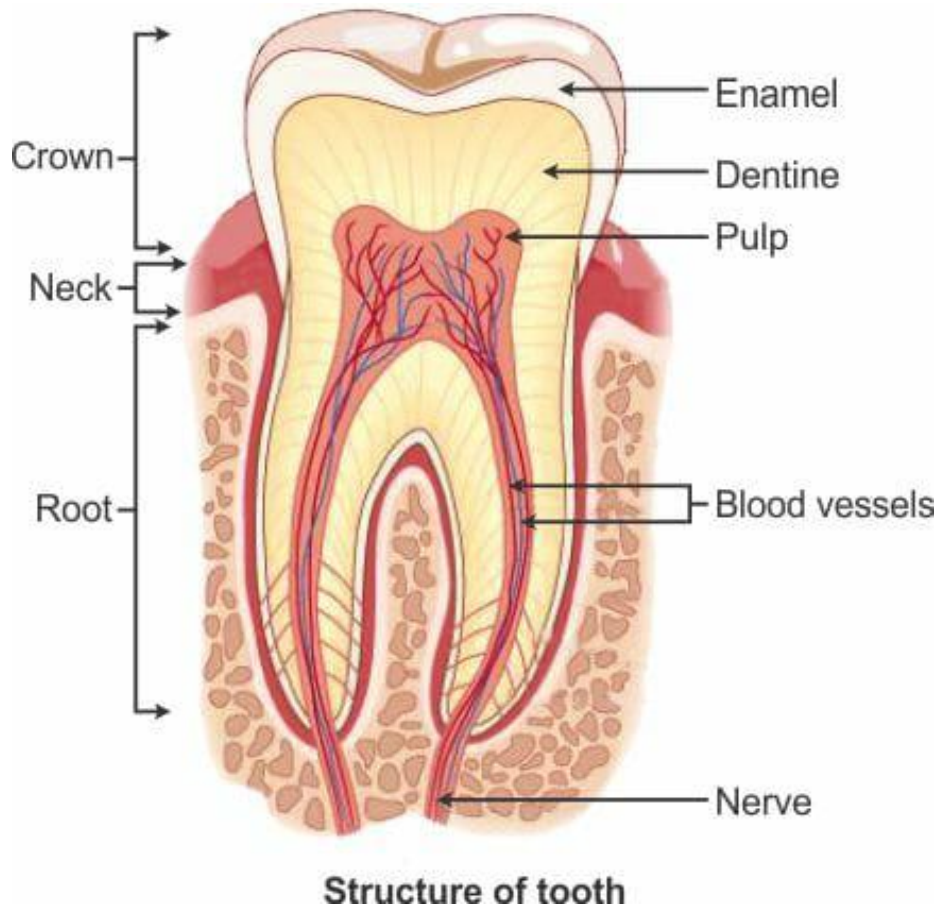


Class-4
Subject -Science
Chapter-7
Topic- Teeth and Microbes
Answer Key

1) Structure of a tooth.



2) While eating food small particles of food get stuck between our teeth. If we don't remove them invisible bacteria will grow on them. Bacteria changes the sugar of leftover food into an acid. This acid dissolves the enamel, then dentine and finally reaches the pulp. Then the tooth decay begins.

3) we can take care of our teeth by following some simple rules

a) We must brush our teeth twice a day. In the morning and before going to bed.

b) Rinse our mouth after every meal.

- c) Avoid eating chocolates, sweets and sticky foods.
 - d) We should eat food rich in calcium, phosphorus and vitamin A. Like eggs, milk ,green leafy vegetables.
 - e) We must visit a dentist at regular intervals for timely checkups.
- 4) Humans have two sets of teeth.
- a) Temporary teeth
 - b) Permanent teeth.
- 5) Protozoa causes malaria and dysentery.

State true or false.

- 1) false.
- 2) false.
- 3) true.
- 4) false.
- 5) true.
- 6) false.
- 7) true.
- 8) false

Answers to questions from textbook page 53.

- C) 1) 8 are incisors.
4 are canines.
8 premolars.
12 are molars.
- 2) Root.
 - 3) Crown.
 - 4) Enamel.

- D) 1) bad breath.
2) grinding food.
3) 2.
4) 8.