

WELLAND GOULDSMITH SCHOOL

CLASS – 3

SUBJECT – GEOGRAPHY

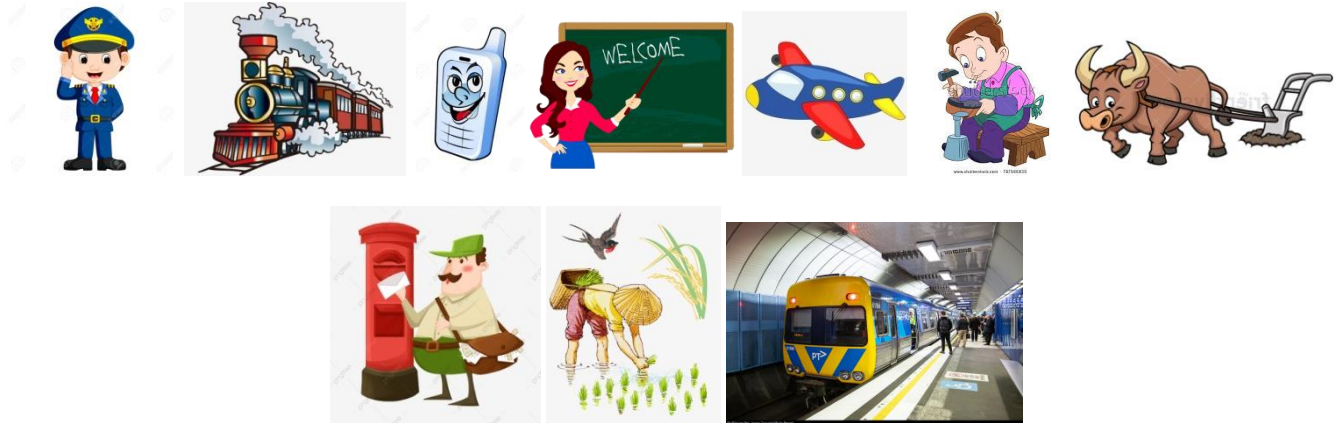
CHAPTERS – (Our Occupation, Our Transport, Our Means of Communication)

WORKSHEET

1. Unscramble the following :

- | | |
|-------------|---------------|
| a) XFA | f) ERALSMIN |
| b) ELAMI | g) CIMA |
| c) TENRETNI | h) RONI |
| d) KCRUT | i) NOISEVILTE |
| e) PHSI | j) LORSTAI |

2. Who am I?

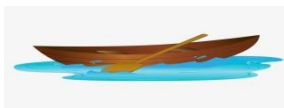


- I fly an aero plane.
- I teach the children.
- I bring letters for you.
- You use me to send short written messages.
- I fly in the air.
- I travel underground.
- I plough the fields.
- I grow crops.
- I mend your shoes.
- I run on rails.

3. Underline the correct options:

- Which means of transport cannot be seen in a city?
(bike / train / tonga)
- When I am ill, I go to a –
(police man / doctor / dentist)
- ISD is used for making –
(local calls / international calls / national calls)
- Which of these belong to mass media?
(telephone / newspaper / fax)
- Which of these are modern means of communication?
(internet / television / letters)
- The fastest means of communication is –
(telephone / letter / newspaper)
- Ropeways are used in –
(mountains / plains / deserts)
- Trees are cut down to make –
(paper / sugar / cotton)
- The oil is produced from –
(pulses / wheat / mustard seeds)
- The fastest train in India –
(The Taj Express / the Rajdhani Express / the Shatabdi Express)

4. The magic grid has names of six means of transport. Find these names and colour them.



G	R	B	I	C	Y	C	L	E
Y	A	L	B	O	A	T	I	C
S	H	I	P	F	B	U	S	J
Z	Q	D	E	C	A	R	H	K
A	E	R	O	P	L	A	N	E



Group them as Land Transport, Water Transport, Air Transport.

LAND TRANSPORT	WATER TRANSPORT	AIR TRANSPORT

5. Draw, Name and colour the following:

- Two water transport.
- Two means of village transport.
- Two means of mass communication.